

Wattage Switchable LED Padel Floodlight

- 4 x Skyline Padel Floodlights per court at 240W, achieves LTA Regional Competition and Recreational compliance of >300 lux
- 4 x Skyline Padel Floodlights per court at 320W, achieves LTA National and International Competition compliance of >500 lux
- Genuine replacement for 600W/1000W Floodlight
- Front and rear spill visor available (Code: 11907)
- Fully encapsulated IP65 TUV certified driver
- CASAMBI & DALI-2 options available
- Wattage switchable function
- Perfect for all Padel Courts
- Rated voltage 120-240V
- Super Slimline Design



CASAMBI



Optional Visors

Quality Assured
Product Warranty¹
8 Year

On site
Warranty²
2 Year

Colour Rendering
Index³
70

Lumens
Maintenance Ratio⁴
L80 B10

Water & Dust
Protected
IP65

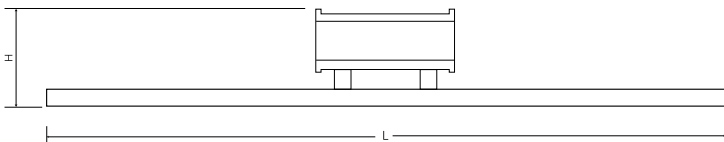
Impact
Rating
IK10

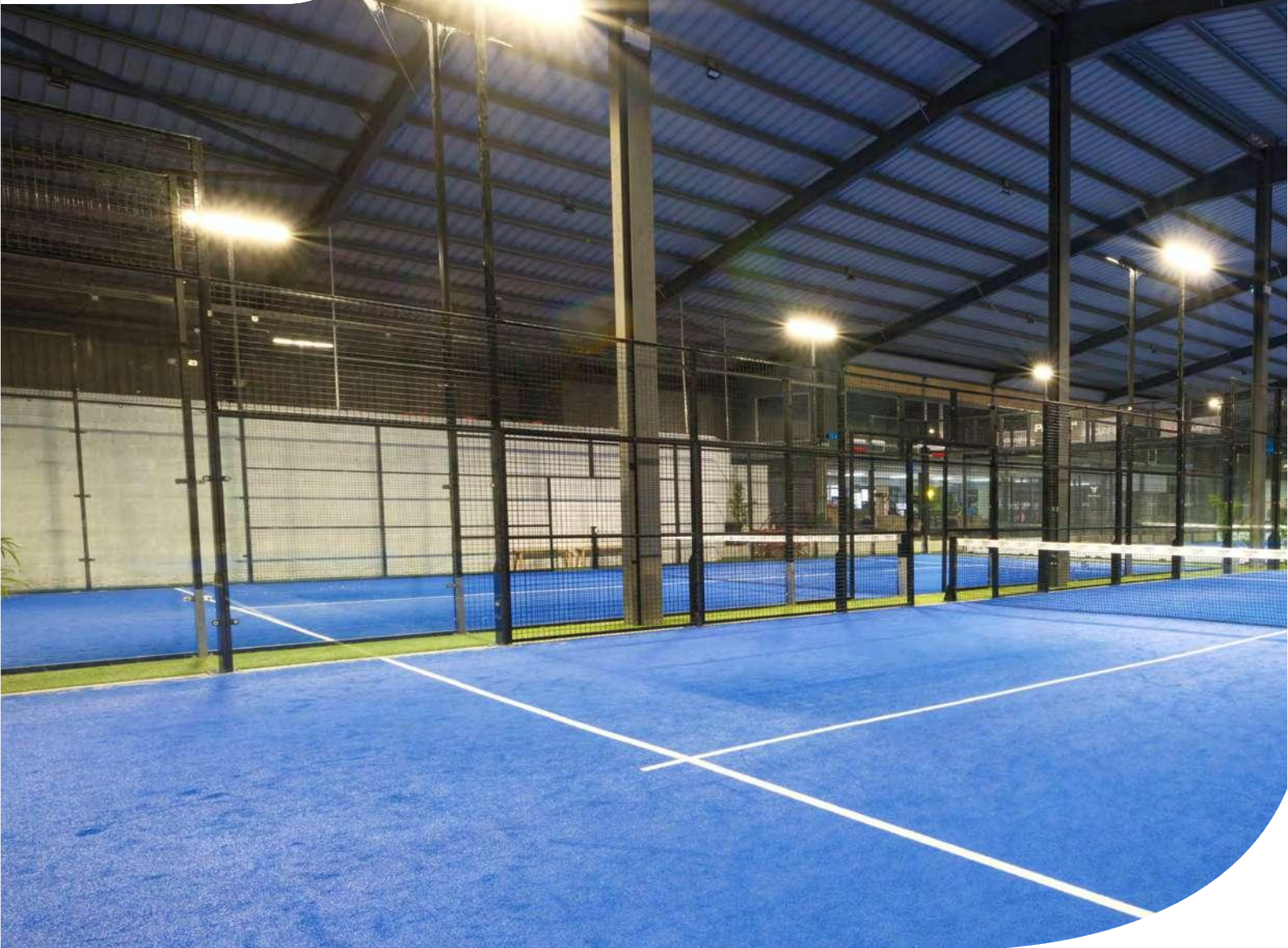
Surge
Protected
20,000V

Operating
Hours
70,000

Technical Specification

Construction	Powder coated extruded aluminium
Driver	Sosen
LED Chip	BMTC 5050
Input Voltage	120-240V
Power Factor	>0.9
Operating Temp	-20°C to +35°C
Standard	CE & UKCA





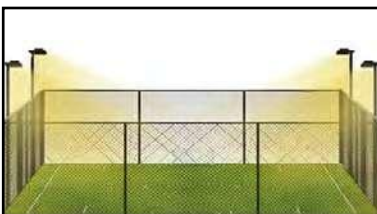
8 Year Gold Warranty

Code	W	Description	Lm	Temp	Lm/W	Weight	Windage	LxHxD (mm)
11906	240 / 320	Padel Floodlight Black	39000 / 52000	4000K	162	7.6Kg	0.1m ² @ 0°	1325x185x149
11907	-	Set of visors for above	-	-	-	-	-	-
11908	-	Bracket for above	-	-	-	-	-	-
11909	-	Post top connector	-	-	-	-	-	-



With advanced asymmetrical intense 40.5° optics, the lighting fixture can be horizontally installed without any complex adjustment.

Padel courts are a standard size, which means that you can easily produce lighting calculation, and simply adjust the fitting to the right angle when mounting.



Four Skyline Padel lights are sufficient to cover one padel court, saving on both lighting fixtures and installation costs.

“

BELL Sports Lighting has completely transformed our facility. The courts have incredibly consistent illumination, and our members have commented on how the lighting is great for players and spectators alike.

We're saving a substantial amount on our monthly energy bills, which is a major benefit for the club. It's also reassuring to know that the system is helping us reduce our carbon footprint. Throughout the entire process, the team at BELL were supportive, responsive, and genuinely helpful.

Their professionalism made the project run smoothly from start to finish, and the long warranties give us confidence in the lighting.

Bradley Bate, Padel 54

”

Lawn Tennis Association

Fully compliant to approved lighting levels standards

technical@belllighting.co.uk
sales@belllighting.co.uk

Padel 54, Moira, Northern Ireland

BELL Skyline Padel Wattage Switchable LED Floodlights were installed to 6 double internal courts and 1 single internal court.

Padel 54 is an outstanding venue, offering players the opportunity to play one of the world's fastest growing sports in the best possible conditions. Venues like Padel 54 are vital in the effort to develop the sport of Padel in Northern Ireland.

As a business, we have invested heavily in Padel, spotting the growth and potential of the sport in the UK at an early stage. It was fantastic to see our Skyline Padel lighting in action, providing an outstanding and high-quality result at Padel 54.



Skyline Padel



- Genuine replacement for 600W/1000W Floodlight
- Wattage switchable function
- Perfect for all Padel Courts
- Super Slimline Design

Case Study: Padel 54, BELL Skyline Padel

Over the life of the fitting, Padel 54 could save: £49,960 in energy costs, energy saving 68%

- Annual Energy Saving 20,392 kWh
- Annual CO₂ Saving 4,715 kg